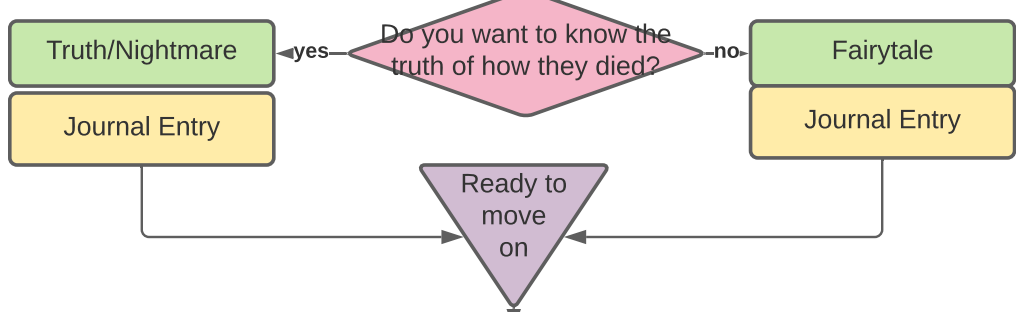


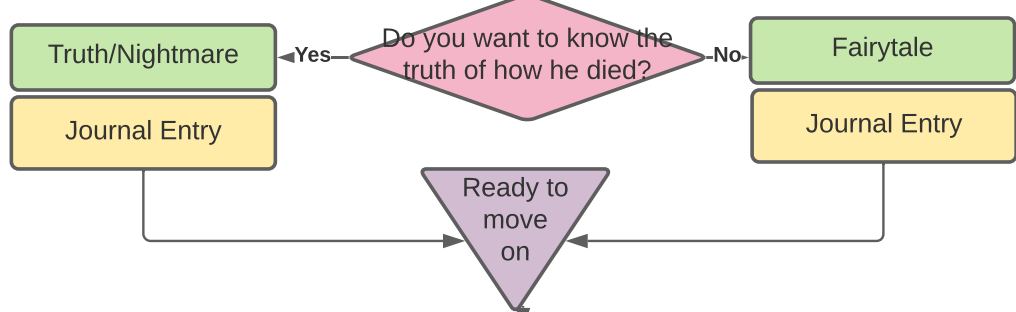
What Remains of
**Hansel
 & Gretel**
 as told by
 Edith Finch

Intro, who, where, why... Now that you are 17 years old and pregnant, you have returned to your childhood home to clarify what happened and tell your child about your family. You have snippets of memory or a fairy tale story This probably isn't going to make sense to you, but your childhood was much much worse than you imagine.

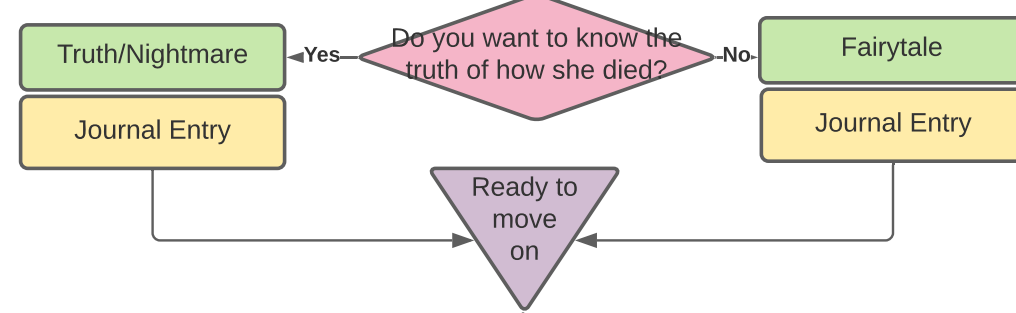
You arrive a a gruesome nest of dead abandoned baby birds.



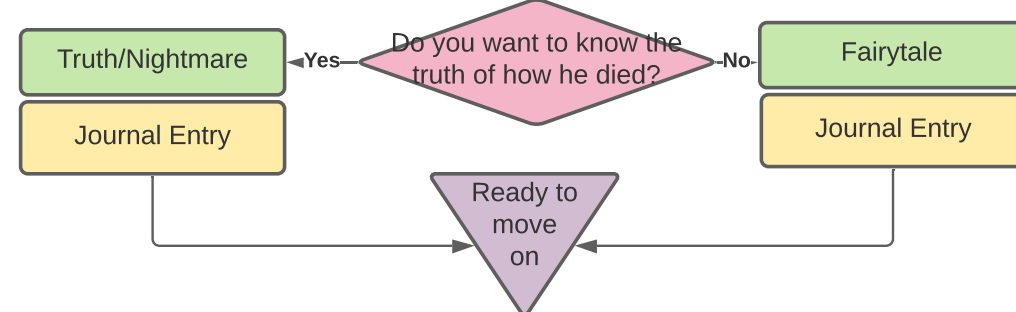
You enter your family home and see your brother's bed



You enter your family home and see your mother's wardrobe

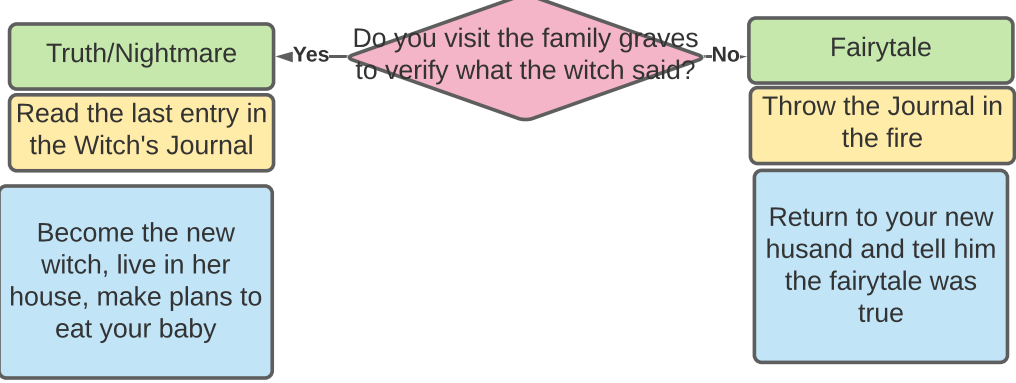
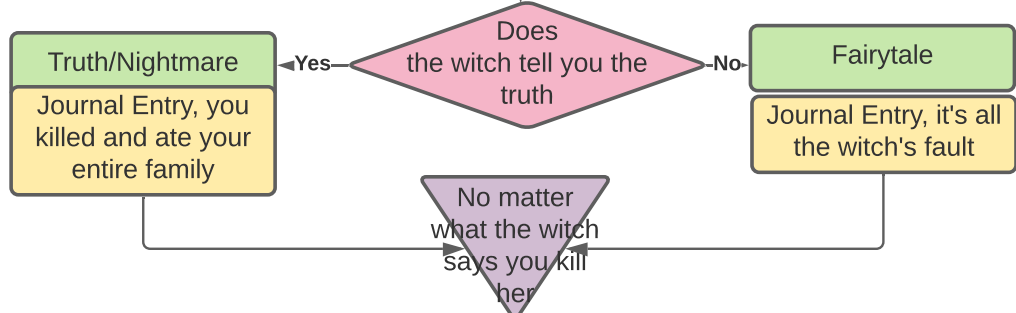


You enter your family home and see your father's tools



You realize that one person killed and ate your entire family

You go to the witch's house to confront her and kill her



Legend

- Narrative (Blue box)
- Options (Green box)
- Journal Entry (Yellow box)
- Merge (Purple triangle)
- Decision (Pink diamond)